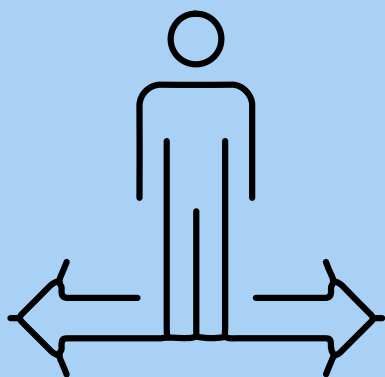


# HOW TO MAKE SMART CAREER DECISIONS EARLY IN LIFE

Plan smart. Move fast. Grow strong.





# WHY EARLY DECISIONS MATTER

What you choose in your 20s doesn't define you forever...

**But it does shape:**

- Your learning curve
- Your mindset
- Your growth opportunities

***Start strong, stay flexible.***

02



# **TIP #1:** **DON'T FOLLOW THE CROWD**

Just because “everyone’s doing it”  
doesn’t mean it’s right for you.

## **Think long-term:**

- What fits your personality, values,  
and strengths?

***Clarity > Conformity***







# **TIP #2:** **KNOW YOURSELF DEEPLY**

**Ask yourself:**

- What excites me?
- What drains me?
- What problems do I enjoy solving?

**Self-awareness is your biggest  
career advantage.**

04





# **TIP #3:** **EXPERIMENT BEFORE YOU DECIDE**

- Try internships
- Join live projects
- Freelance or volunteer
- Take short-term courses

***Try > Think > Decide***

Test before you commit.





# **TIP #4:** **LEARN SKILLS, NOT JUST DEGREES**

Focus on market-relevant skills:

- Communication
- Tech tools
- Problem-solving
- Project management

**Skills open more doors than  
certificates.**

06





# **TIP #5:** **CHOOSE GROWTH, NOT COMFORT**

Early in your career, pick roles that:

- Challenge you
- Teach fast
- Expose you to new people and ideas

**Growth happens outside  
the comfort zone.**





# RECAP

## SMART DECISIONS = STRONG FOUNDATION

- Don't follow the crowd
- Know yourself
- Experiment early
- Learn valuable skills
- Choose growth

**You don't need to figure it all out,  
just make your next move smarter.**

Want more guidance on career planning, growth mindset & early decisions?

Follow [www.zylentrix.net](https://www.zylentrix.net) |        

for weekly carousels to power your career journey.

**DM** us **“CAREER STARTER”** for free resources & mentorship tips.